

BlackSpot Rum Regatta 2024



7 - 8 December 2024

The Organising Authority is the Lowry Bay Yacht Club Incorporated (LBYC)

Seaview Marina, 100 Port Road, Lower Hutt | Tel (04) 568 3715 |

Website: www.lbyc.org.nz Email: info@lbyc.org.nz

Sailing Instructions

Rules

- 1.1 The event is governed by the rules as detailed in the Notice of Race.
- 1.2 The Wellington Regional Navigation Safety Bylaws 2021 apply, refer to www.gw.govt.nz/assets/Documents/2022/01/Navigation-and-Safety-Bylaws-2021-Text-1.5-WEB.pdf.

Notices to competitors

- 2.1 The race office is located in the LBYC club house, email info@lbyc.org.nz.
- 2.2 The official notice board is online at www.lbyc.org.nz/rum-regatta and notices may also be posted on the notice board in the Lowry Room at the LBYC club house.
- 2.3 On the water, all VHF radio communication from or to the race committee shall be on VHF channel 77 or another channel advised by the race committee.

Signals made ashore

- 3.1 Signals ashore will be displayed on the flagstaff located at the LBYC club house.
- 3.2 When flag AP is displayed ashore, '1 minute' is replaced with 'not less than 30 minutes' in Race Signals AP.

Schedule of Races

- 4.1 The schedule of races is as follows:

	Saturday 7 December 2024	Sunday 8 December 2024
Number of Races	Four (4) laid Courses.	Three (3) laid Courses.
First Warning Signal	1025hrs	1025hrs
Last Warning Signal	1530hrs	1400hrs

- 4.2 The order of start of the first race is:

- 1 Division 1
- 2 Division 2
- 3 Cruising Division

- 4.3 The warning signal for a subsequent race for a division will be made as soon as practicable but not sooner than 5 minutes after the last boat finishes the previous race for that Division.

Class Flags

- 5.1 The class flag for the Spinnaker Division 1 is a yellow flag.
- 5.2 The class flag for the Spinnaker Division 2 is a Green flag.
- 5.3 The class flag for the Non-Spinnaker Division is a Purple flag (refer also SI 20).

Racing Area

- 6 The Rum Regatta races will be held on the northern and eastern waters of Wellington Harbour.

Courses

- 7.1 The courses to be sailed, the order in which the marks are to be passed, and the side on which each mark is to be left are shown in Addendum A & B 'Marks and Courses'.
- 7.2 The course for all races will be signalled by displaying the course number on the Committee Boat and may also be announced by VHF at least 5 minutes prior to the first warning signal of any race.

Marks

- 8. The description of the marks is in Addendum A & B 'Marks and Courses'.

The Start Line

- 9.1 The starting line will be between a staff displaying an orange flag on the Race Committee boat and the starting mark, an orange spherical mark at the port end.
- 9.2 When a starting sequence is in progress, boats whose warning signal has not been made shall avoid the starting area. The starting area is defined as the area 50 metres from the starting line and marks in all directions.
- 9.3 A boat starting later than ten minutes after her starting signal will be scored Did Not Start (DNS) without a hearing. This changes RRS A5.1 and A5.2.

The Finish Line

- 10. The finishing line will be between a staff displaying a blue flag on the Race Committee boat and the finishing mark, an orange spherical mark.

Time Limits

- 11.1 There is a target time for spinnaker division races, which is 45 minutes.
- 11.2 For the Spinnaker Divisions, a boat failing to finish within 20 minutes after the first boat in her division and who sails the course and finishes will be scored Did Not Finish. This changes Rules 35 and A4.1 and A5. This time limit will be adjusted if the 2 divisions are amalgamated.
- 11.3 For the Cruising Division, a boat failing to finish within 20 minutes after the first boat in her division and who sails the course and finishes will be scored Did Not Finish. This changes Rules 35 and A4.1 and A5.

Non-Spinnaker Division

- 12. Spinnakers and multi-purpose sails shall not be used in the non-spinnaker division. A boat that uses a spinnaker or multi-purpose sail in breach of this instruction will be disqualified without a hearing. This changes RRS 63.1.

Intention to Race

- 13.1 At the registration on Saturday morning, all boats shall advise Lynn at the registration table, the number of persons on board. A boat failing to comply with this requirement may be scored DNF without a hearing. This changes RRS35, A4 and A5.
- 13.2 Before their first warning signal on Sunday, all boats shall communicate by VHF to the race committee that they intend to race and advise the number of persons on board. A boat failing to comply with this requirement may be scored DNF without a hearing. This changes RRS35, A4 and A5.
- 13.3 A boat retiring from a race or not intending to compete in further scheduled races shall, as soon as possible, communicate by VHF to the race committee that they have retired from the race. A boat failing to comply with this requirement may be scored DSQ without a hearing. This changes RRS35, A4 and A5.

REGATTA INFLATABLE MARK COURSES



NB Treat ALL inflatable marks as unlabeled



Competing boats can transit through the start/finish line during the race between Marks 1 and 3



COMMITTEE BOAT 'Shariba'

VHF Ch's 77 & 16

Course Laying and Emergency Assistance

Boat—'Trader'



VHF Ch's 77 & 16

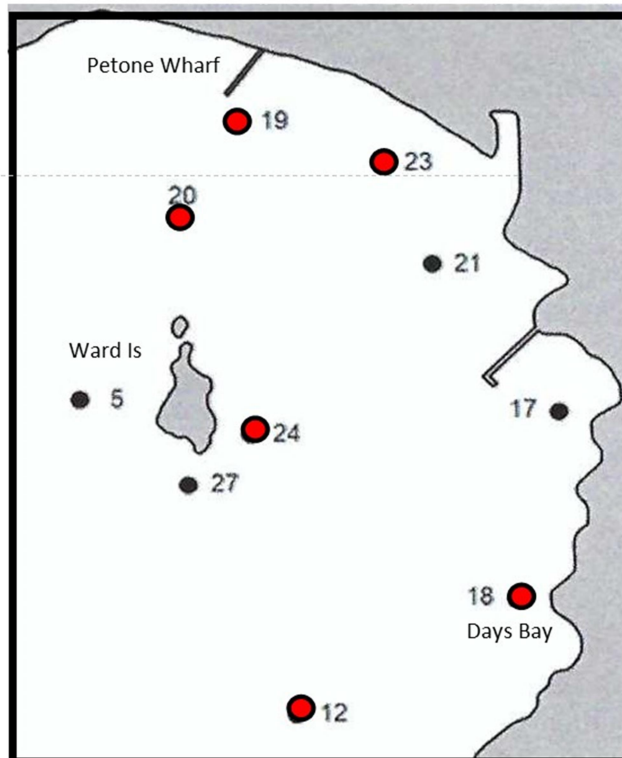


REGATTA INFLATIBLE MARK COURSES

COURSE No.	WINDWARD LEEWARD COURSES
1	START—1P—FINISH (off wind)
2	START—1AP - FINISH (off wind)
3	START—1P—3P - FINISH (on wind)
4	START—1AP—3P - FINISH (on wind)
5	START—1P—3P – 1P— FINISH (off wind)
6	START—1AP—3P – 1AP - FINISH off wind)
7	START—1P—3P– 1P – 3P - FINISH (on wind)
8	START—1AP—3P – 1AP—3P - FINISH (on wind)

COURSE No.	TRIANGULAR COURSES
9	START—1P –2P—3P—FINISH (on wind)
10	START—1AP– 2P—3P—FINISH (on wind)
11	START—1P—2P—3P– 1P - FINISH (off wind)
12	START—1AP—2P—3P– 1AP— FINISH (off wind)
13	START—1P—2P—3P – 1P—2P—3P FINISH (on wind)
14	START—1AP—2P—3P – 1P—2P—3P -FINISH on wind)

COURSE DIAGRAM & COURSES—FIXED HARBOUR RACE MARKS



NORTHERLY COURSES

- | | |
|---|--|
| A | START— 19 P— FINISH (off- wind) |
| B | START—19 P— 20P—FINISH (off-wind) |
| C | START— 19 P— 24P—FINISH (on-wind) |
| D | START—19 P— 24P—FINISH (on-wind) |
| E | START—19 P— 18P—FINISH (on-wind) |
| F | START— 19 P— 24P— 18P—FINISH (on-wind) |

SOUTHERLY COURSES

- | | |
|---|--|
| G | START - 18S – FINISH (off- wind) |
| H | START - 18S –24S - FINISH (off- wind) |
| I | START - 18S –19S - FINISH (on-wind) |
| J | START - 18S –24S –19S - FINISH (on-wind) |
| J | START—12S—FINISH (off- wind) |